



PROPERTY
SERVICES
LIMITED



54 Bramble Street , Coventry, CV1 2HT

£725 Per Calendar Month



Luxury Studio-Style Lux-Suite – Available Now

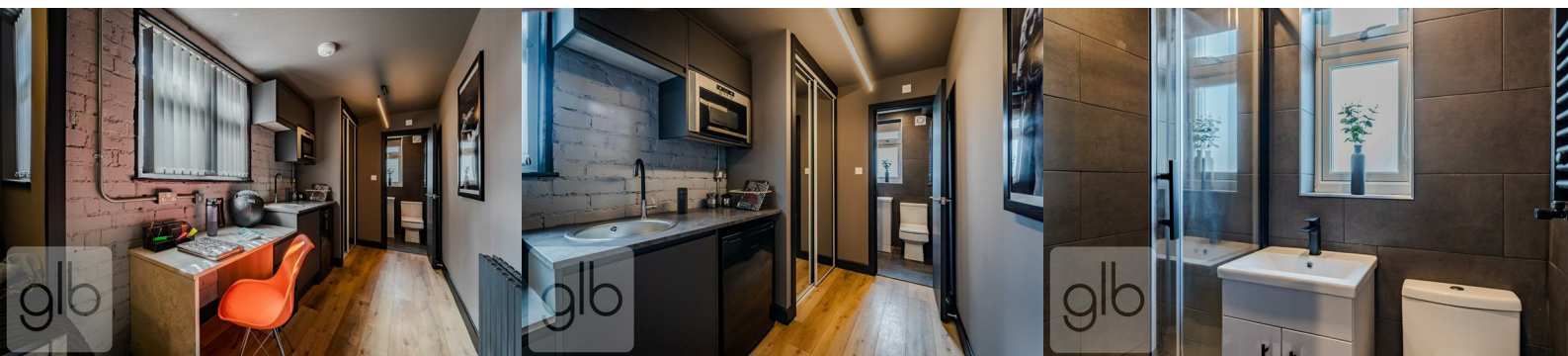
£750 PCM | ALL BILLS INCLUDED | SINGLE OCCUPANCY ONLY | ZERO DEPOSIT OPTION

Looking for a little luxury close to the city? These beautifully designed Lux-Suites are just a 10-minute stroll to Coventry City Centre and Coventry University, offering the perfect blend of privacy, comfort, and stylish co-living.

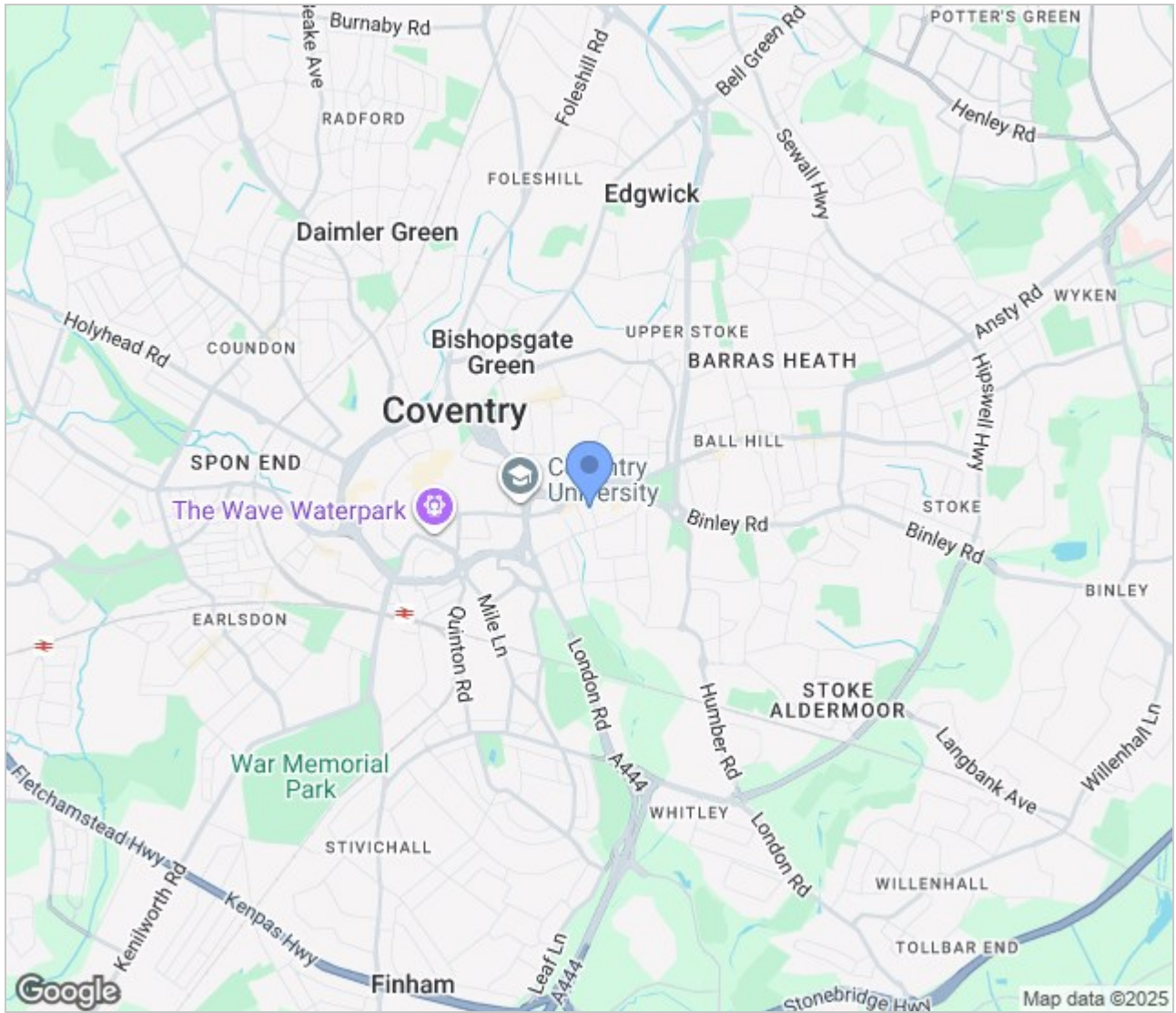
Your Lux-Suite Includes:

- *Small kitchenette with fridge, microwave & sink
- *Cleverly designed open-plan living/sleeping area
- *Fully furnished to a high standard
- *Private, modern shower room
- *Contemporary furnishings including bed, wardrobe, desk, and chair

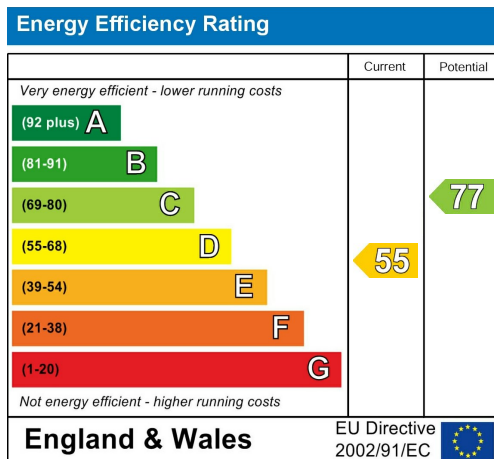
Shared Amenities Within the Building:



Area Map



Energy Efficiency Graph



These particulars, whilst believed to be accurate are set out as a general outline only for guidance and do not constitute any part of an offer or contract. Intending purchasers should not rely on them as statements of representation of fact, but must satisfy themselves by inspection or otherwise as to their accuracy. No person in this firm's employment has the authority to make or give any representation or warranty in respect of the property.

GLB Property Services Ltd
9 Hay Lane
Coventry, CV1 5RJ

T. 02476 433416

info@glbpropertyservices.com
www.glbpropertyservices.com

